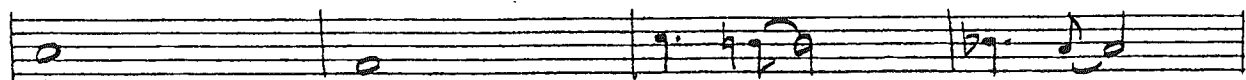
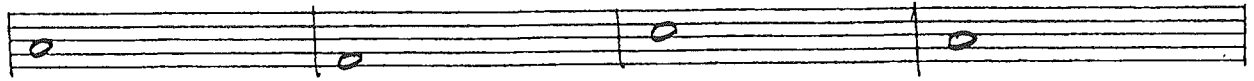
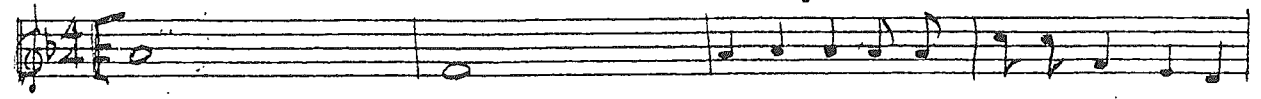


# Slow Down

[aka George & Ira Gershwin Special Song #31]

by George Gershwin  
and Ira Gershwin

*Slow Down.*



A handwritten musical score consisting of eight systems of staves. The first system has a single staff with a treble clef. The second system has two staves, with the upper staff in treble clef and the lower staff in bass clef. The third system has a single staff with a treble clef. The fourth system has two staves, with the upper staff in treble clef and the lower staff in bass clef. The fifth system has a single staff with a treble clef. The sixth system has two staves, with the upper staff in treble clef and the lower staff in bass clef. The seventh system has two staves, with the upper staff in treble clef and the lower staff in bass clef, featuring a first ending bracket labeled '1.' and a second ending bracket labeled '2nd.'. The eighth system has two staves, with the upper staff in treble clef and the lower staff in bass clef. The notation includes various notes, rests, accidentals, and dynamic markings such as 'p' and 'f'.

Property of Gna Gershwini

Printed in U.S.A.

all rights reserved

CHAPPELL PROF.