

Piano Piece or Ballet

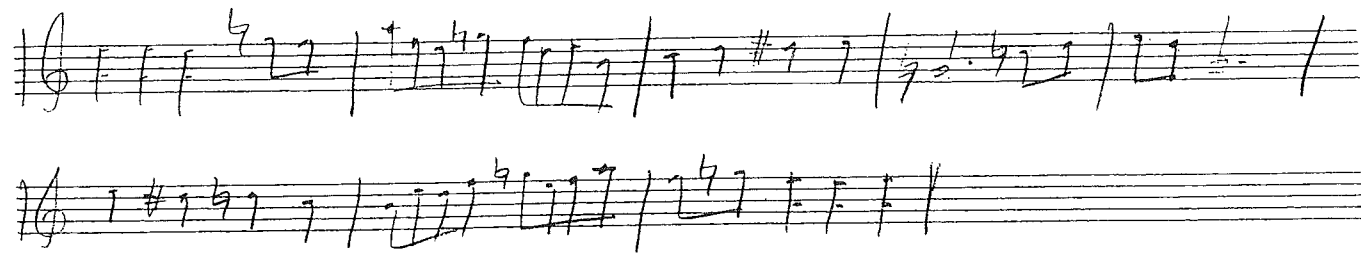
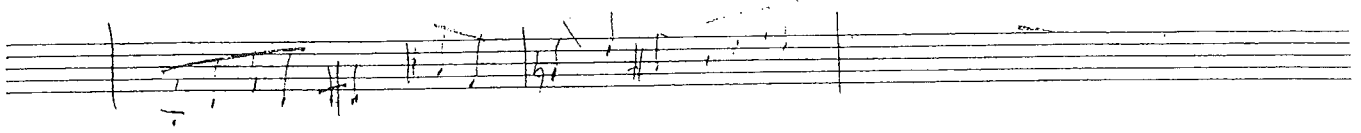
by George Gershwin
and Ira Gershwin

Handwritten musical notation on a grand staff. The top staff is in treble clef and the bottom staff is in bass clef. The music consists of two measures, each with a vertical bar line. The notation includes various note values, rests, and accidentals.

Handwritten musical notation on a grand staff. The top staff is in treble clef and the bottom staff is in bass clef. The music consists of two measures, each with a vertical bar line. The notation includes various note values, rests, and accidentals.

Four empty grand staves, each consisting of a treble clef staff and a bass clef staff.

$A + B \rightarrow A_1 + B_1$ *A and B developed*



A handwritten musical score consisting of 12 staves. The notation is dense and includes various musical symbols such as notes, rests, accidentals (sharps, flats, naturals), and dynamic markings. The score is written in a cursive, handwritten style. The first staff begins with a treble clef and a key signature of two sharps (F# and C#). The notation includes many accidentals and some complex rhythmic patterns. There are some markings above the staves, including a double bar line with repeat dots, a vertical line with a '1' above it, and an 'X' above the sixth staff. The overall appearance is that of a working draft or a composer's sketch.