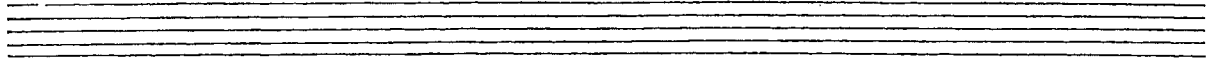
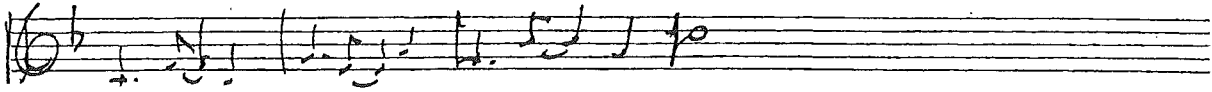


I Play the Piano

[aka George & Ira Gershwin Miscellaneous Song #17e]

Music and Lyrics by
George Gershwin and Ira Gershwin



I play the piano I play the drums and when the revolution comes
I'll play the piano I'll play the drums - I'll get along

Handwritten musical notation for the lyrics. The first line of music corresponds to the first line of lyrics. The second line of music corresponds to the second line of lyrics. The notation includes treble clef, key signature of one sharp (F#), and 4/4 time signature. The notes are: G4 (quarter), A4 (quarter), B4 (quarter), C5 (quarter), B4 (quarter), A4 (quarter), G4 (quarter), F#4 (quarter), E4 (quarter), D4 (quarter), C4 (half). The second line of music is: G4 (quarter), A4 (quarter), B4 (quarter), C5 (quarter), B4 (quarter), A4 (quarter), G4 (quarter), F#4 (quarter), E4 (quarter), D4 (quarter), C4 (half).