

Half Past Eight

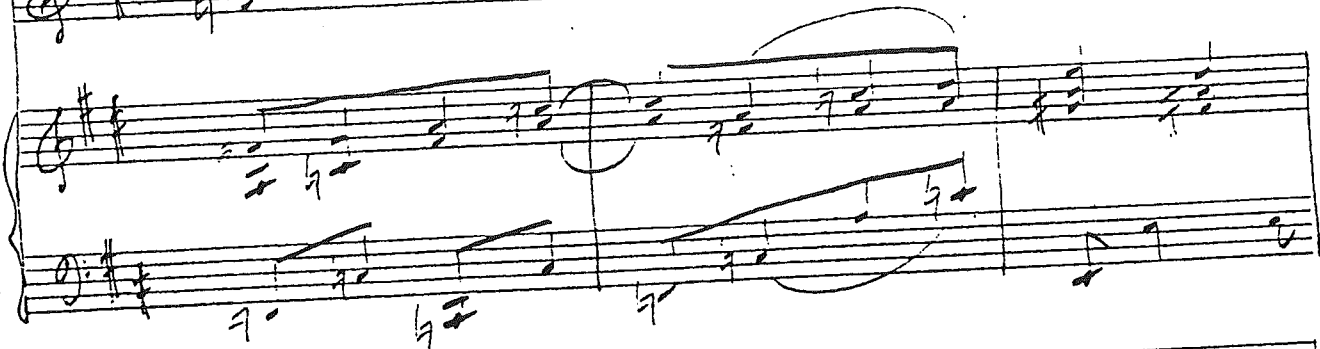
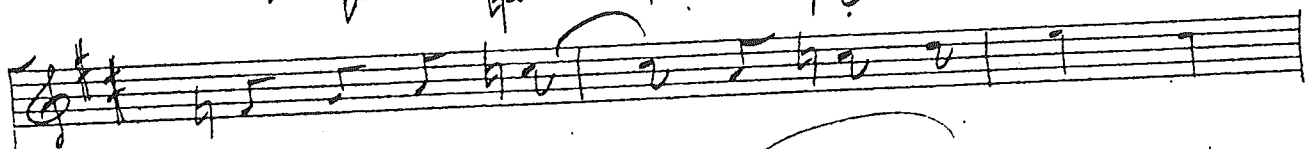
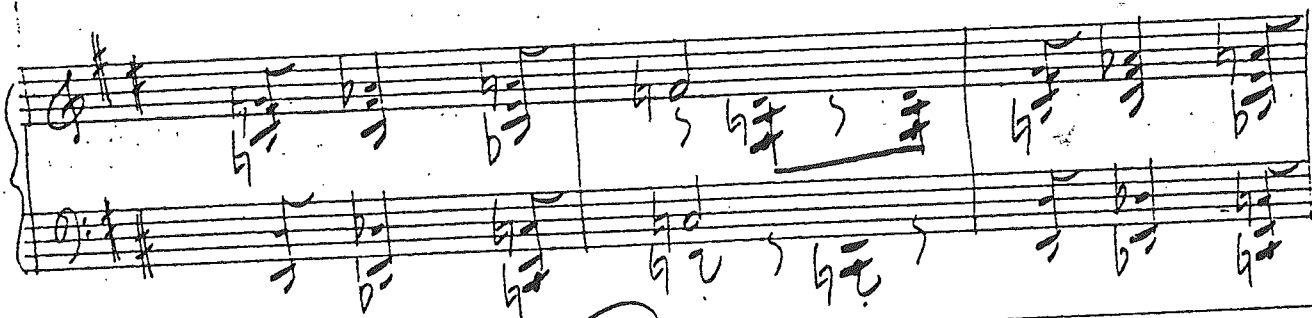
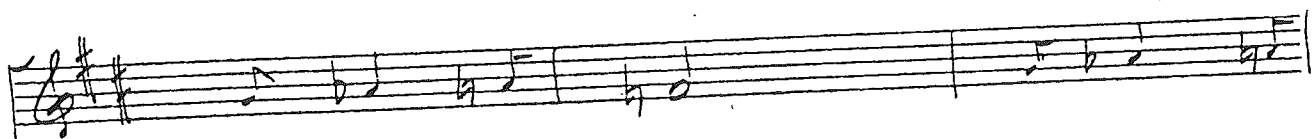
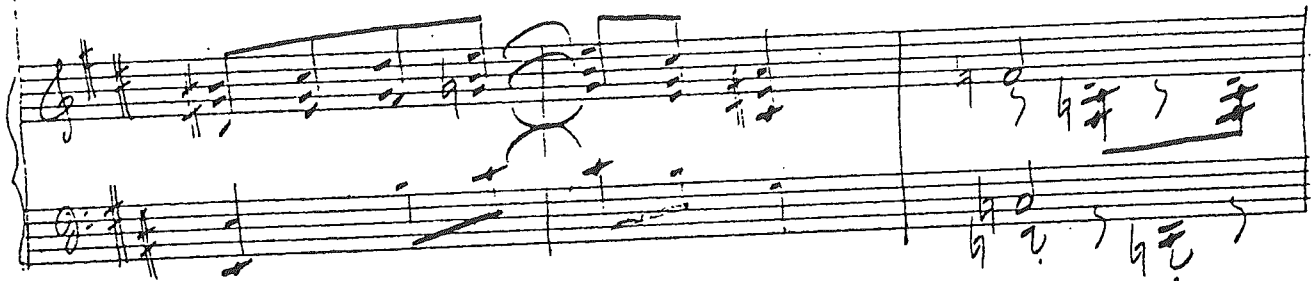
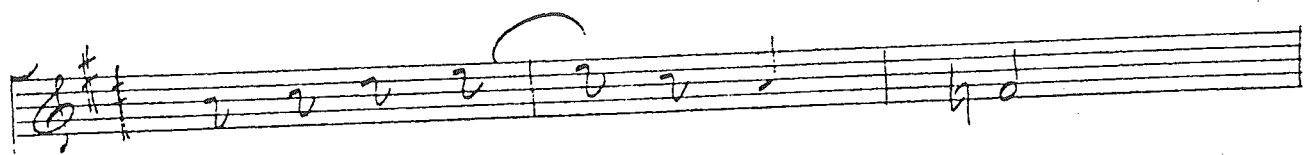
[aka George & Ira Gershwin Miscellaneous Song #26a]
(intended for *Half Past Eight*)

by George Gershwin
and Ira Gershwin

Handwritten musical notation for the first system, consisting of two staves. The notation includes notes, rests, and some markings above the notes, possibly indicating articulation or dynamics.

Two empty musical staves, likely intended for a second system of music.

Handwritten musical notation for the second system, consisting of four staves. The notation includes notes, rests, and some markings above the notes, possibly indicating articulation or dynamics.



Handwritten musical score for piano, consisting of 10 systems of staves. The notation includes treble and bass clefs, a key signature of one sharp (F#), and various musical symbols such as notes, rests, slurs, and dynamic markings like "Ped." and an asterisk "*". The score is written in a fluid, handwritten style.



Refrain.

Handwritten musical score for piano and voice, consisting of eight systems of staves. The notation includes treble and bass clefs, a key signature of one sharp (F#), and various musical symbols such as notes, rests, and dynamic markings. The score is written in ink on aged paper.

Dynamic markings include *poco cresc.* in the sixth system.



Handwritten musical score for the first system. The top staff is a treble clef with rhythmic notation. The bottom two staves are a grand staff with piano accompaniment. The piano part includes the instruction "poco cresc." and dynamic markings "f" and "p".

Handwritten musical score for the second system, consisting of a single treble clef staff with a melodic line.

Handwritten musical score for the third system. The top staff is a treble clef with a melodic line. The bottom two staves are a grand staff with piano accompaniment.

Handwritten musical score for the fourth system. The top staff is a treble clef with a melodic line. The bottom two staves are a grand staff with piano accompaniment. The piano part includes the instruction "Ped.".

Handwritten musical score for the fifth system, consisting of a single treble clef staff with a melodic line.

Handwritten musical score for the sixth system. The top staff is a treble clef with a melodic line. The bottom two staves are a grand staff with piano accompaniment. The piano part includes the instruction "Ped.".

Handwritten musical notation on a page. The top system consists of a single staff with a treble clef, a key signature of one sharp (F#), and a 2/4 time signature. A large slur covers the first two measures, with a fermata over the second measure. The second system is a grand staff (treble and bass clefs) with a key signature of one sharp. It contains several measures of music, including a complex chordal passage with many notes and accidentals. A large slur is under the first two measures. The notation is somewhat messy and appears to be a working draft. The initials "S.O.S." are written in the bottom right corner of the first system.