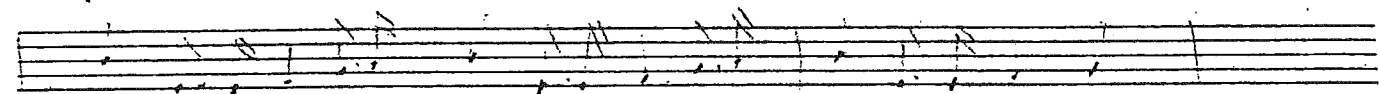
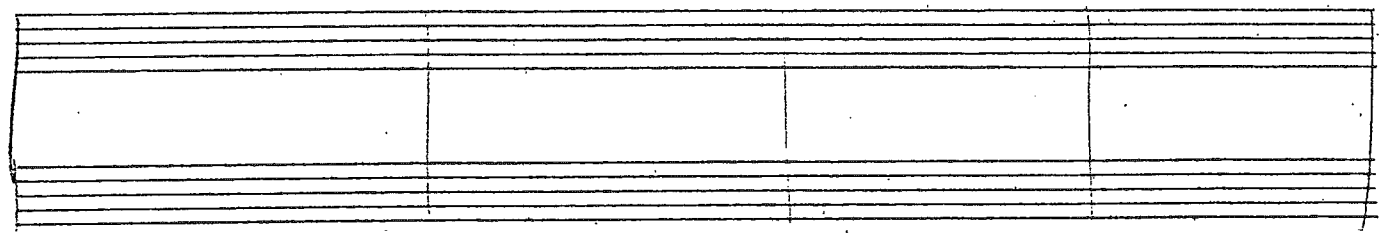
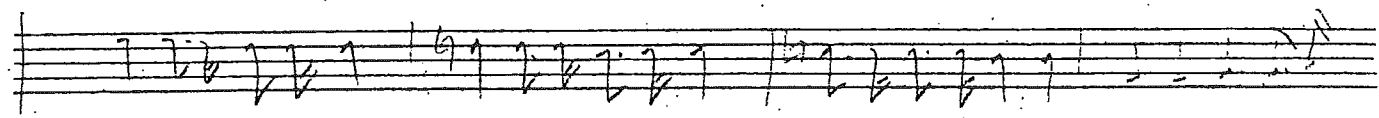
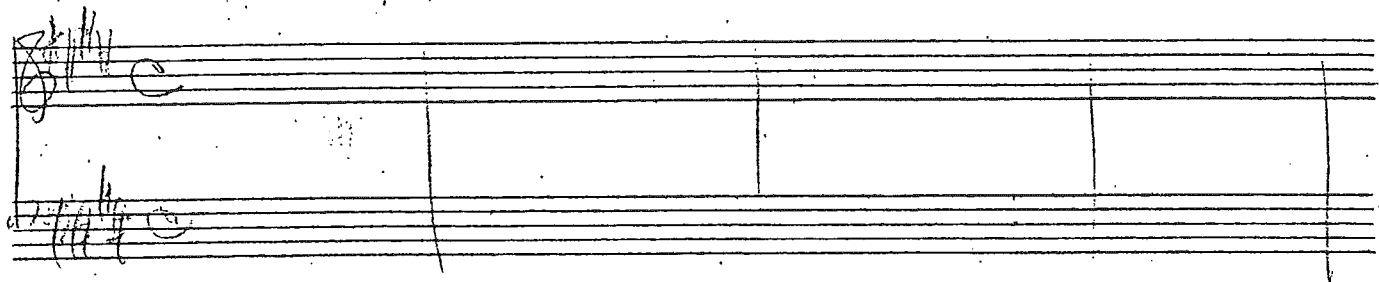
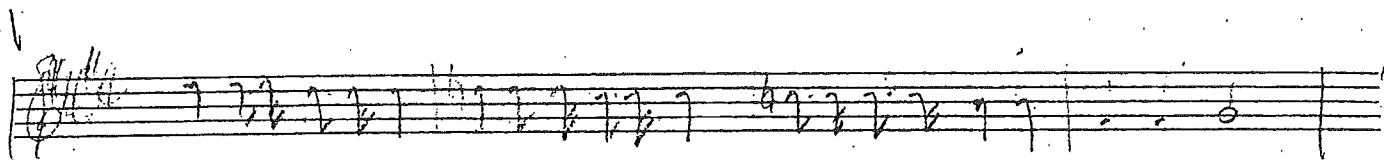


England

[aka George & Ira Gershwin Miscellaneous Song #10]

by George Gershwin
and Ira Gershwin



Handwritten musical notation on a single staff, featuring a treble clef, a key signature of one sharp (F#), and a 4/4 time signature. The notation includes a whole note followed by a series of eighth notes.

Handwritten musical notation on two staves. The top staff has a treble clef and a key signature of one sharp. The bottom staff has a bass clef and a key signature of one sharp. The notation includes various note values and rests.

Handwritten musical notation on a single staff, featuring a treble clef and a key signature of one sharp. The notation includes a series of eighth notes.

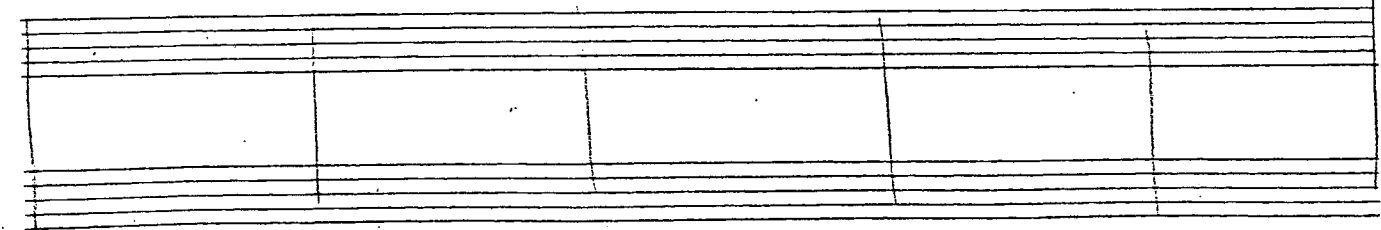
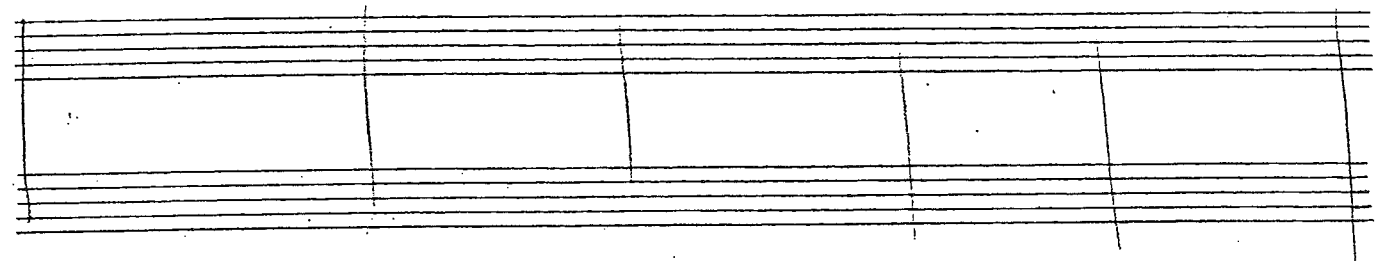
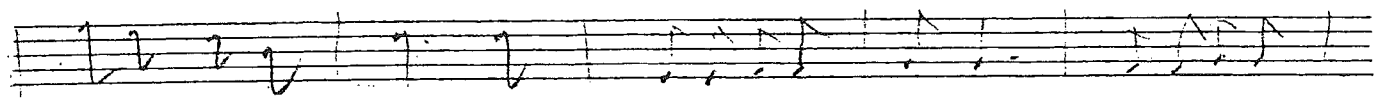
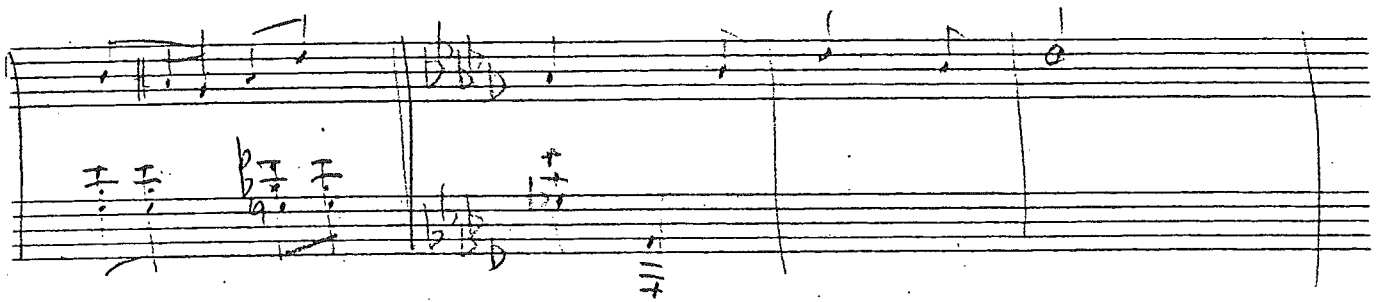
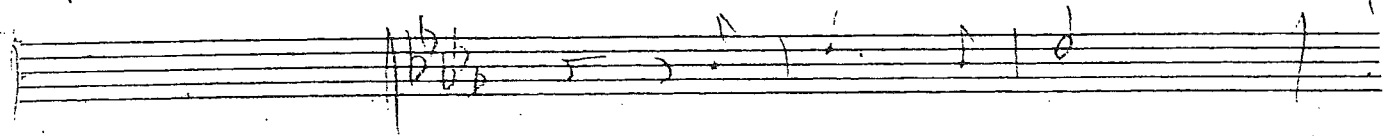
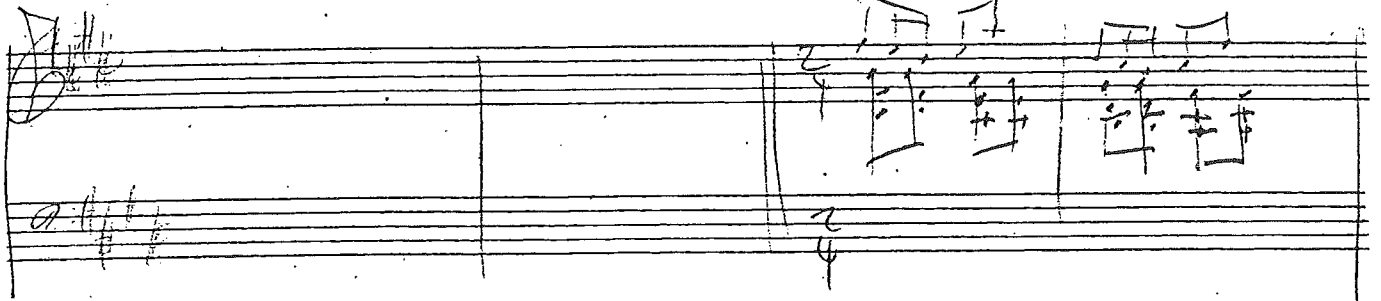
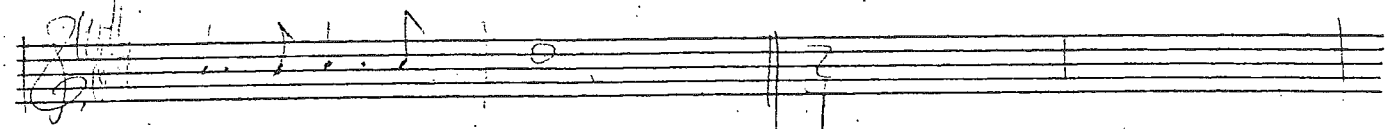
Handwritten musical notation on two empty staves, likely representing a section of the score that is not fully developed or is a placeholder.

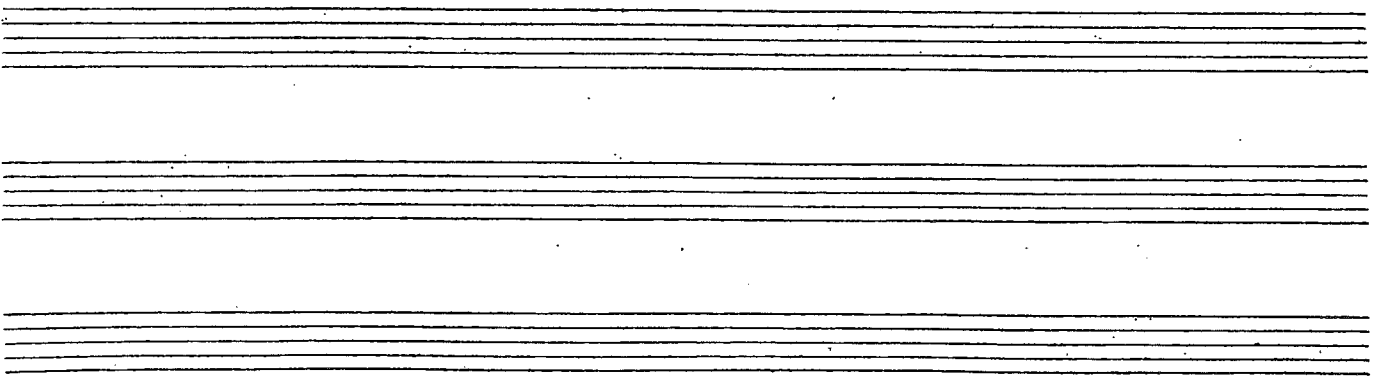
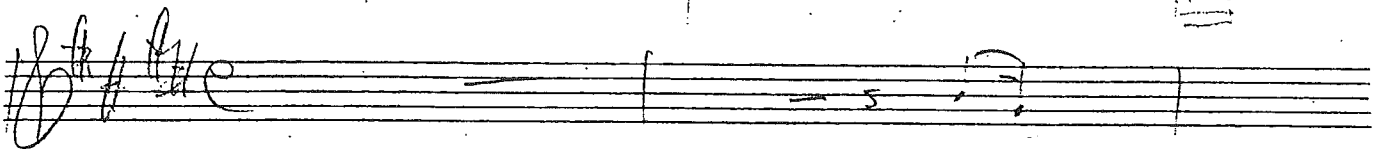
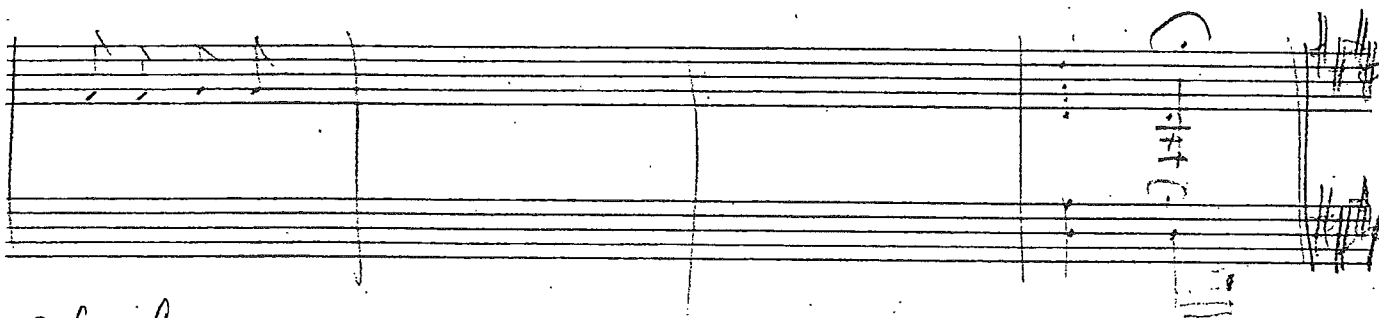
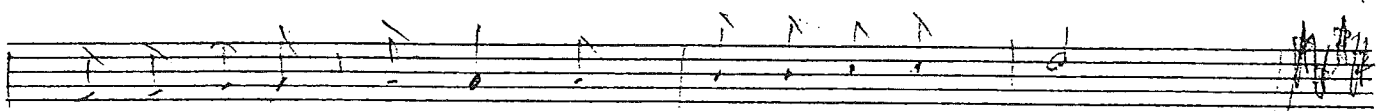
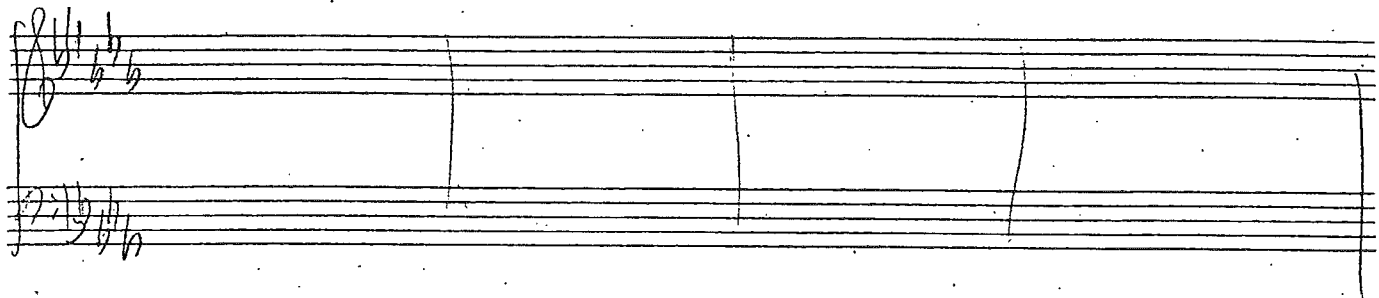
Handwritten musical notation on a single staff, featuring a treble clef and a key signature of one sharp. The notation includes a series of eighth notes.

Handwritten musical notation on two staves. The top staff has a treble clef and a key signature of one sharp. The bottom staff has a bass clef and a key signature of one sharp. The notation includes various note values and rests.

Handwritten musical notation on a single staff, featuring a treble clef and a key signature of one sharp. The notation includes a series of eighth notes.

Handwritten musical notation on two empty staves, likely representing a section of the score that is not fully developed or is a placeholder.





Handwritten musical notation on a grand staff. The top staff has a treble clef and a key signature of one flat (B-flat). The bottom staff has a bass clef. The music consists of several measures with notes, rests, and a triplet of eighth notes in the third measure of the top staff.

Handwritten musical notation on a grand staff. The top staff has a treble clef and a key signature of one flat. The bottom staff has a bass clef. The music consists of several measures with notes, rests, and a triplet of eighth notes in the first measure of the top staff.

Handwritten musical notation on a grand staff. The top staff has a treble clef and a key signature of one flat. The bottom staff has a bass clef. The music consists of several measures with notes, rests, and a triplet of eighth notes in the third measure of the top staff.

Handwritten musical notation on a grand staff. The top staff has a treble clef and a key signature of one flat. The bottom staff has a bass clef. The music consists of several measures with notes, rests, and a triplet of eighth notes in the third measure of the top staff. The word "cho" is written above the final measure of the top staff.



Handwritten musical notation on three staves. The top staff contains a treble clef, a key signature of one flat (B-flat), and a 4/4 time signature. The first staff has a treble clef and a key signature of one flat. The second staff has a bass clef and a key signature of one flat. The notation includes various notes, rests, and bar lines.

Handwritten musical notation on three staves. The top staff has a treble clef and a key signature of one flat. The second staff has a bass clef and a key signature of one flat. The notation includes various notes, rests, and bar lines.

Handwritten musical notation on three staves. The top staff has a treble clef and a key signature of one flat. The second staff has a bass clef and a key signature of one flat. The notation includes various notes, rests, and bar lines.

Handwritten musical notation on three staves. The top staff has a treble clef and a key signature of one flat. The second staff has a bass clef and a key signature of one flat. The notation includes various notes, rests, and bar lines.





Handwritten musical notation on a single staff, featuring a treble clef and a series of rhythmic notes with stems.

Two empty musical staves with a treble clef on the top staff and a bass clef on the bottom staff.

Handwritten musical notation on a single staff, featuring a treble clef and a series of notes with stems.

Two musical staves with handwritten notes and symbols, including a treble clef and various musical notations.

A single musical staff with handwritten notes and symbols, including a treble clef.

Two musical staves with handwritten notes and symbols, including a treble clef and various musical notations.

Four empty musical staves.